

## The following service tools might be needed to perform a repair

### Preparation before maintenance:

#### • Tools

1. Pliers
2. Phillips screwdriver
3. Protective glasses
4. Multimeter
5. Clamp Meter (5A)



6. Adjustable wrench
7. Electric soldering iron
8. Wire strippers
9. Sealing pliers
10. Protective gloves



#### • Equipment

1. Vacuum pump
2. Brazing equipment
3. Pressure gauge/refrigerant meter



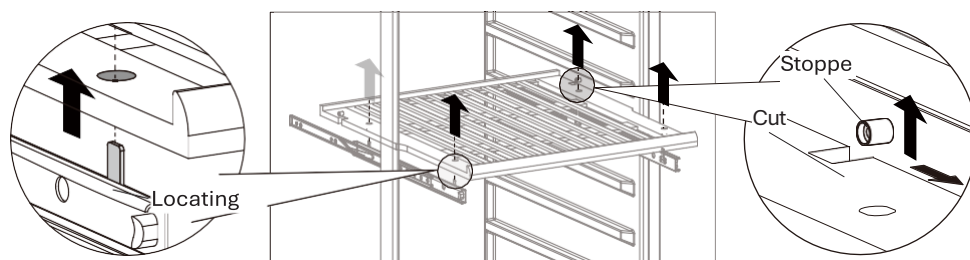
## Removing/installing the shelves

### Shelf with guide rail

For a shelf with guide rails, it can be removed and put back directly and simply, as shown in the photos below. Note that there are positioning holes at the bottom of both sides of the shelf and positioning pieces on the guide rails.

- 1, Before removing a shelf from the appliance, it is necessary to remove all the bottles off the shelf
- 2, For a model without Telescopic Rail, move the shelf to the position where the cut of the wooden shelf is directly under the plastic stopper and lift the wooden shelf. Please ensure these are replaced when the shelf is put back.
- 3, Make sure the shelves are fully engaged before loading any bottle into the cabinet.
- 4, Pull the shelves out all the way to the STOPPER position and push them back in several times to make sure the shelves are properly engaged.

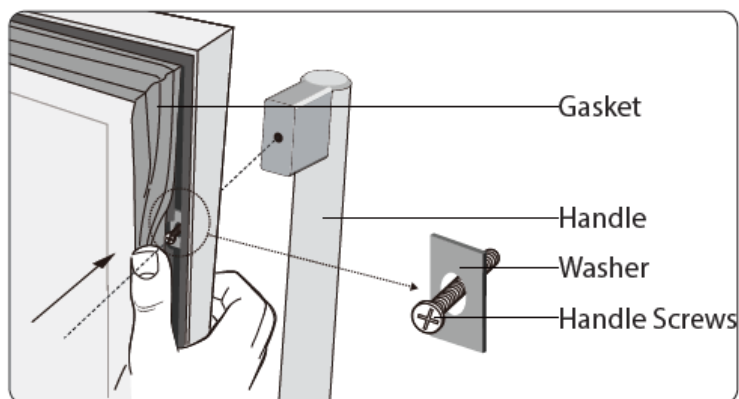
Lift the whole Shelf upwards horizontally to get it off from the 4 locating pins of telescopic Rail.



### Installing handle

To install the door handle:

1. Place the handle over the pins on the door.
2. Open the door and pull the door gasket from the door frame to have access to the screws.
3. Fix the handle to the door with the screws. Be careful, do not fix the screws tight to avoid damage to the door.

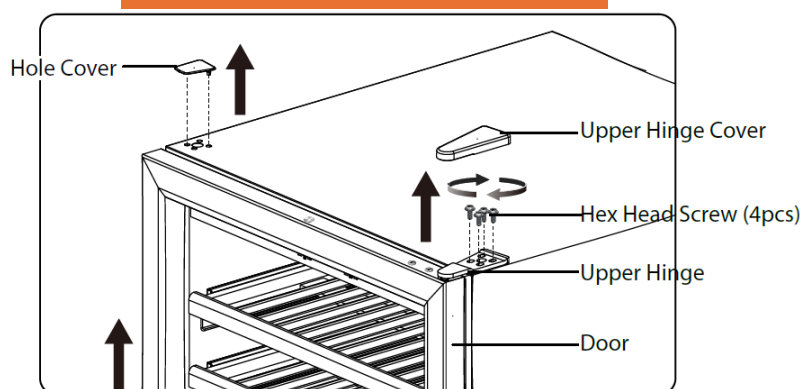


## Door & hingeremoval of freestanding models

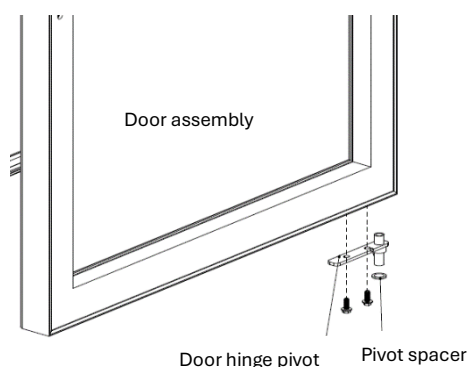
To remove the door of a wine cooler of a freestanding model, remove the upper hinge first. There is no need to tilt the wine cabinet. However, due to the heavy door, careful operation is required.



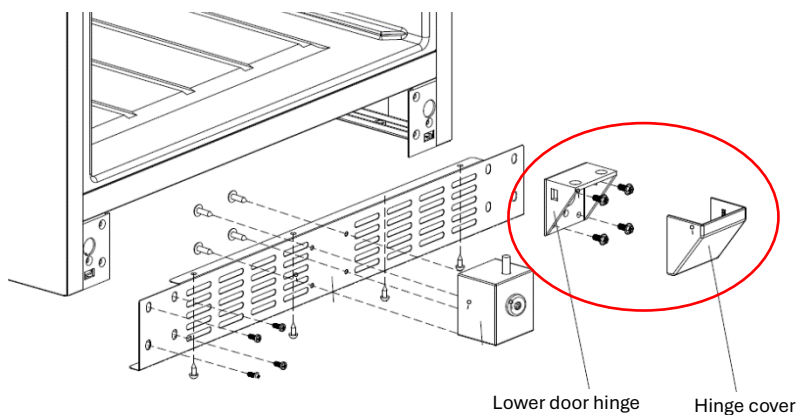
Open the door hinge cover, remove the four screws, loosen the door hinge, and take out the door assembly



As shown in the figure above, when removing the door, first open the upper door hinge cover, and then remove the four screws to loosen the upper door hinge, and then take out the door assembly. Pay attention to well protect and keep the lower door hinge pivot and the pivot spacers. To further remove the door pivot assembly, remove the two screws with a screwdriver, as shown in the figure below.



To continue to remove the lower hinge, first remove the lower hinge cover, and then remove the four fastening screws, as shown in the photos below. If the lower hinge is enclosed by a protruding-style front grille, it is necessary to remove the protruding-style front grille first, the guidelines of which can be found in next pages.

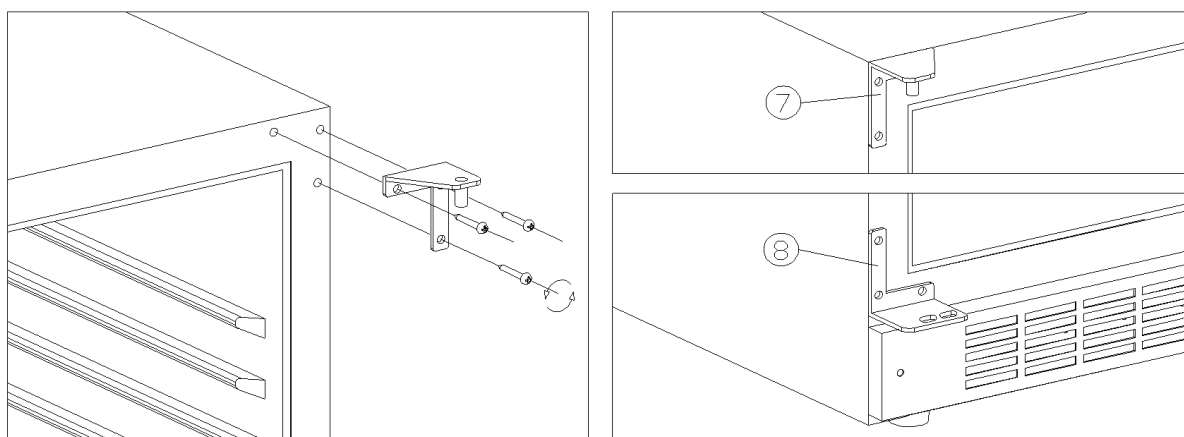


Remove hinge cover and remove the screws to remove the lower hinge



To reinstalling the door, just reverse the operation. As the door is heavy, two people is needed if necessary. Also, grease the upper pivot, lower door pivot, pivot sleeve and door pivot washer, check the matching of the door, gasket and cabinet. The assembly of the door must be aligned and symmetrical. Opening and closing the door should be handled easily with good feel. The gasket and the cabinet should be aligned and sealed well, without gap or seam.

## Door reverse & hinge removal of DAUF-40.138 / Sera-40



If desired, the door direction can be reversed after the appliance is installed. We recommend reversing the door direction with two people.

To reverse the door direction, follow the next steps:

1. Prepare a flat and soft surface to place the door on during the process.
2. Unscrew the three screws from the bottom hinge.
3. Unscrew the three screws from the top hinge.
4. Place the door on the soft surface.
5. Remove the hole covers.
6. Place the hole covers on the holes where you remove the hinges.
7. Rotate the door 180°. Align the hinges with the free holes at the top and bottom of the appliance.
8. Secure the top hinge with three screws.
9. Secure the bottom hinge with three screws.
10. Place the hole covers.

### Door gasket removal/installation

The door gasket deformation, folding, warping and other faults will cause the leakage of cold air, insufficient cooling, and long-term non-stop of the compressor. When solving the problem, first try to use an electric hair dryer to blow the deformation part of the gasket with hot air, shake it back and forth while blowing, reshape the gasket with heat. Just replace a new gasket if it cannot be fixed.

When replacing a new door gasket, first pull out the old one, then align the four corners and four sides of the new gasket with the corresponding slot on the door, and then tap the gasket gently with a rubber hammer along the route of the gasket, as shown in the following photos.



Importer and brand owner is Dunavox

### Company details

**Name:** Dunavox Kft

**Headquarters:** Hungary, 2151 Fót, Fehérkő út 8/b

**Website:** <https://dunavox.com/page/home>

**Contact:** [info@dunavox.com](mailto:info@dunavox.com)