

The following service tools might be needed to perform a repair

Preparation before maintenance:

• Tools

1. Pliers
2. Phillips screwdriver
3. Protective glasses
4. Multimeter
5. Clamp Meter (5A)



6. Adjustable wrench
7. Electric soldering iron
8. Wire strippers
9. Sealing pliers
10. Protective gloves



• Equipment

1. Vacuum pump
2. Brazing equipment
3. Pressure gauge/refrigerant meter

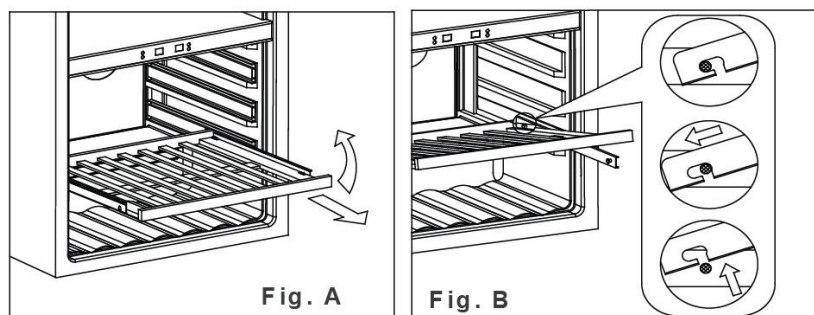
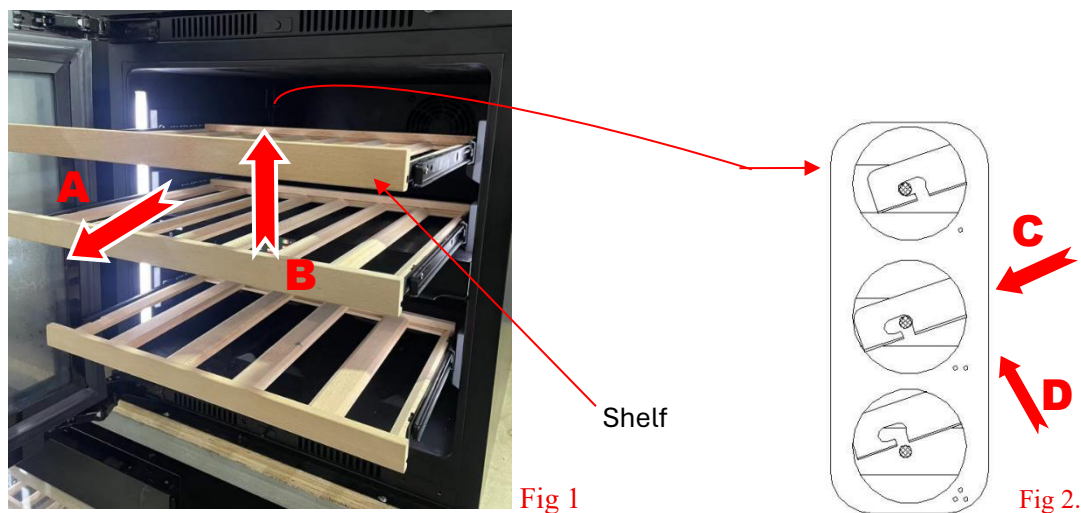


Removing/installing the shelves

Models:

All DVN (Noble), DVH (Horizon), DVP (Prime), DVS (Spirit) models.

Pull out the shelf (A) and lift the front end of the shelf (B) (Fig.1), then push the two side of the back end of the shelf to the appropriate position (C) and evenly lift the shelf up and then pull the shelf out (D) (Fig.2)



1, Before removing a shelf from the appliance, it is necessary to remove all the bottles off the shelf
2, Pull the shelves out all the way to the STOPPER position and push them back in several times to make sure the shelves are properly engaged.

3, Make sure the shelves are fully engaged before loading any bottle into the cabinet

Door & hinge reverse

Models:

All DVN (Noble) and DVH (Horizon) models.

Note: Two people are required to replace the door.

Fig. A

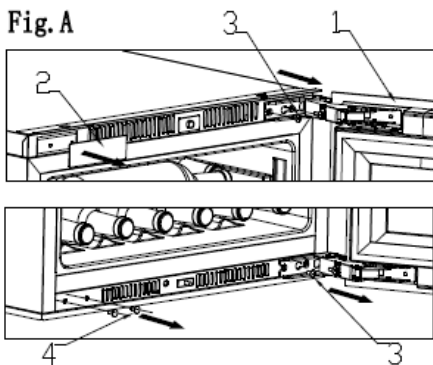


Fig. B

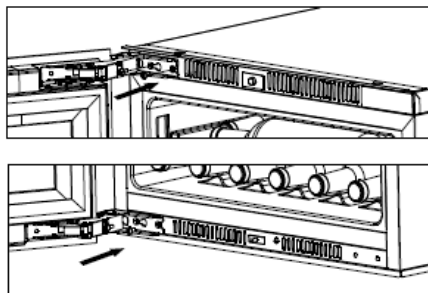


Fig. C

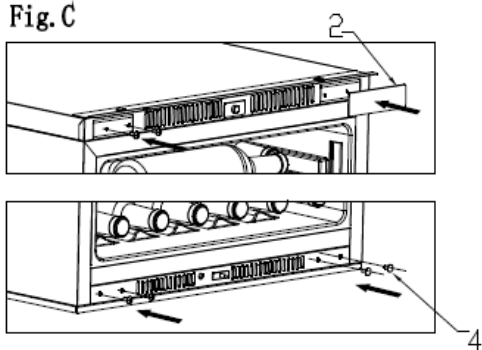


Fig. D

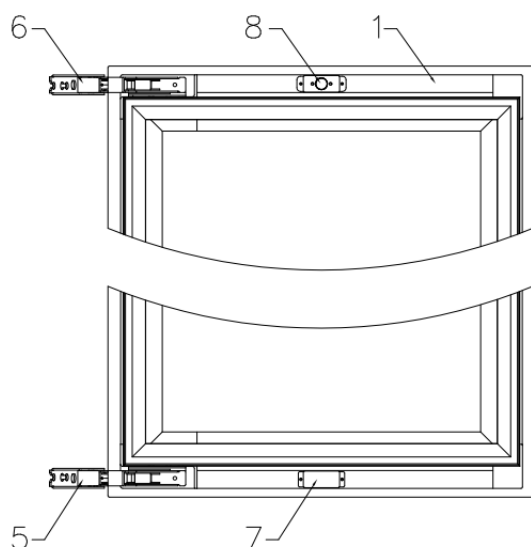
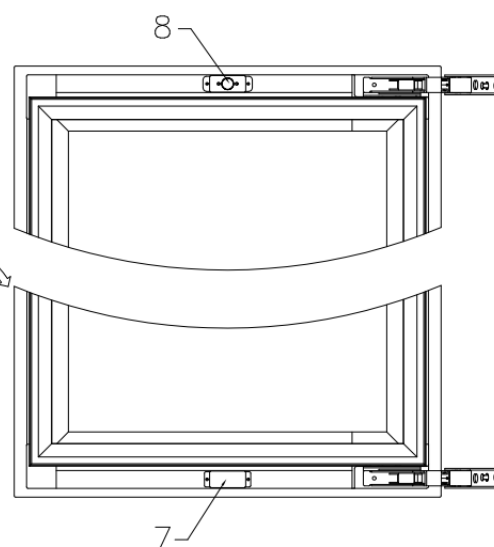


Fig. E



1. door 2. decorative plate 3. screw 4. decorative nail 5/6. door hinge 7. door lamp press 8. knob box

Step by step guide:

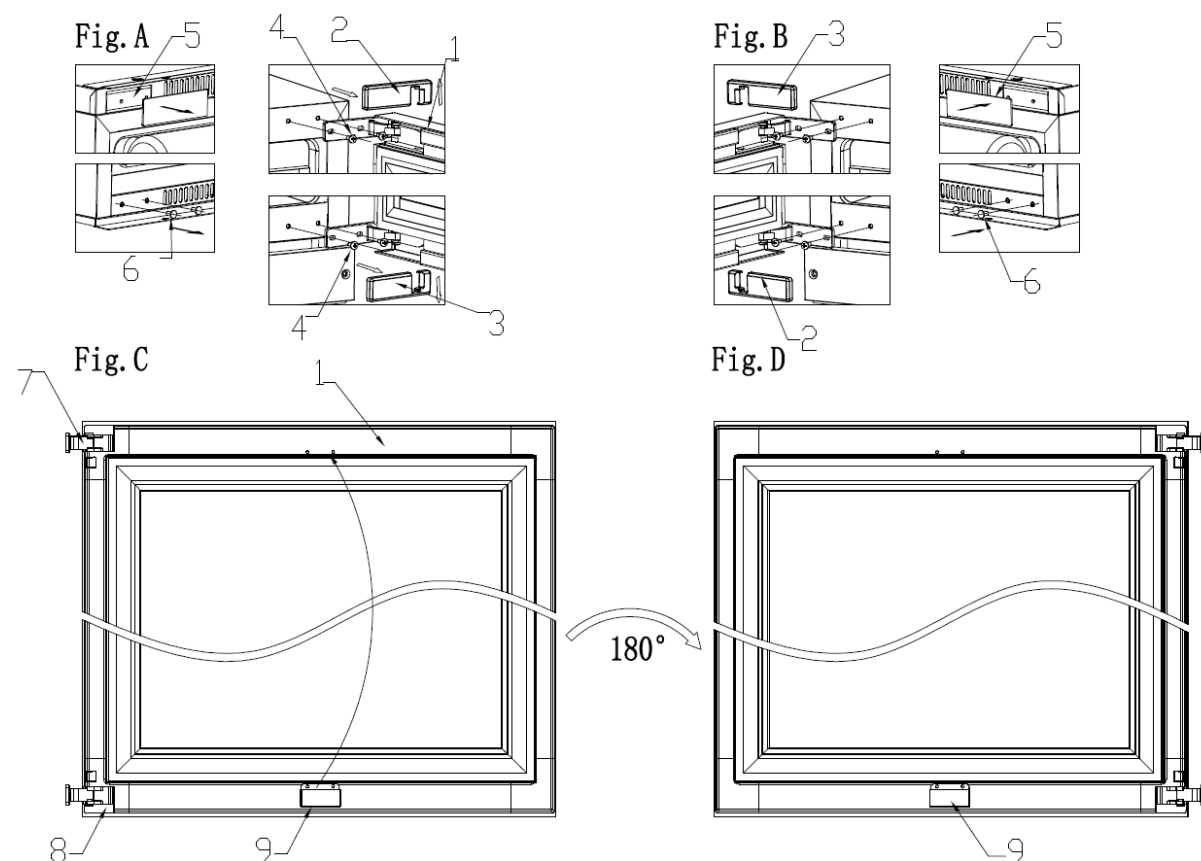
1. Open the door and remove the decorative piece (2) on the upper left side and the decorative nail (4) on the lower left side.
2. Remove all screws (3) from the upper and lower hinge, and then remove the door (Fig.A).
3. Remove the pressure plate of the door lamp (7) and install it on the upper door frame, remove the knob box (8) and install it on the lower door frame, and then rotate the door 180 degrees (Fig.D, E).
4. Fix the screws in the upper left corner and lower left corner of the box, and be careful not to tighten them (Fig.B).
5. Put the door hinge into the screws in the upper left corner and lower left corner, align with the slot, and tighten the screws to ensure that the door hinge is tight (Fig.B).
6. Finally, install decorative pieces (2) and decorative nails (4) in the upper right corner and lower right corner of the box (Fig.C).

Door & hinge reverse

Models:

All DVP (Prime) and DVS (Spirit) models.

Note: Two people are required to replace the door.



1. Door 2. right door hinge cover 3. right lower door hinge cover 4. screw 5. decorative pieces (22 is for decorative nails) 6. decorative nails 7/8. door hinge 9. door lamp press

Step by step guide:

1. Open the door and remove the decorative piece or decorative nails (5) on the upper left side and the decorative nail (6) on the lower left side (Fig.A);
2. Pull the right door hinge cover (2) forward and upward, and then pull the right lower door hinge cover (3) forward and downward (Fig.A);
3. Remove all screws (4) from the upper and lower hinge, and then remove the door (Fig.A);
4. Press the door lamp (9) Remove and install it on the upper door frame, and then rotate the door 180 degrees (Fig.C, D);
5. Fix the door hinge on the left side of the box with screws and tighten the screws to ensure that the door hinge is tight (Fig.B);
6. Finally, install decorative pieces (5) and decorative nails (6) in the upper right corner and lower right corner of the box (Fig.B).

Door gasket replacement/removal

Models:

All DVN (Noble), DVH (Horizon), DVP (Prime), DVS (Spirit) models

The door gasket deformation, folding, warping and other faults will cause the leakage of cold air, insufficient cooling, and long-term non-stop of the compressor. When solving the problem, first try to use an electric hair dryer to blow the deformation part of the gasket with hot air, shake it back and forth while blowing, reshape the gasket with heat. Just replace a new gasket if it cannot be fixed.

When replacing a new door gasket, first pull out the old one, then align the four corners and four sides of the new gasket with the corresponding slot on the door, and then tap the gasket gently with a rubber hammer along the route of the gasket, as shown in the following photos.



Importer and brand owner is Dunavox

Company details

Name: Dunavox Kft

Headquarters: Hungary, 2151 Fót, Fehérkő út 8/b

Website: <https://dunavox.com/page/home>

Contact: info@dunavox.com