

The following service tools might be needed to perform a repair

Preparation before maintenance:

- Tools

1. Pliers
2. Phillips screwdriver
3. Protective glasses
4. Multimeter
5. Clamp Meter (5A)



6. Adjustable wrench
7. Electric soldering iron
8. Wire strippers
9. Sealing pliers
10. Protective gloves



- Equipment

1. Vacuum pump
2. Brazing equipment
3. Pressure gauge/refrigerant meter



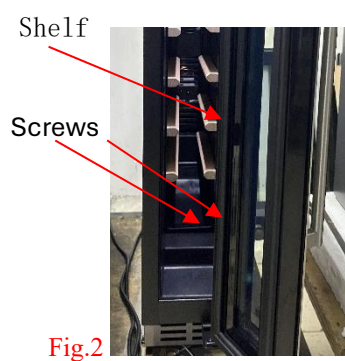
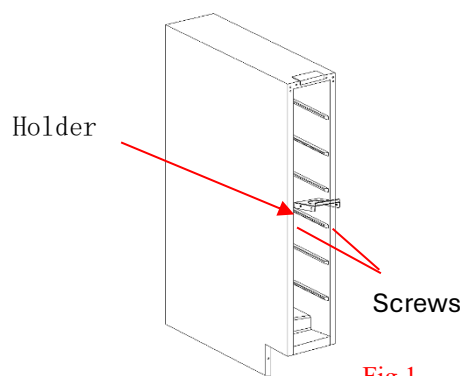
### Removing/installing the shelves

#### Model:

DAUF-8.23

Loosen the side screws of the holder, then pull the holder out and remove it (Fig.1)

Loosen the bottom screws of the shelf, then pull the shelf out and remove it (Fig.2)



#### Models:

DAUF-16.64, DAUF-32.83 & DAUF-32.78

### Removing/installing the shelves

Push the shelf to the end, and revolve the shelf on either side, make the stopper on the out of the guiding rail, then pull the shelf out (Fig.1).

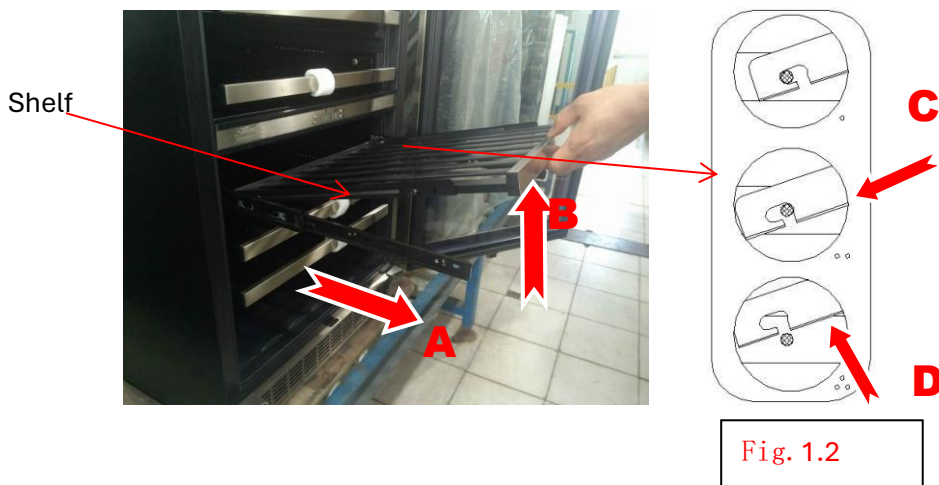


## Models:

DAUF-39.121, DAUF-39.119DOP.TO, DAUF-46.138, DAUF-41.146

## Removing/installing the shelves

Open the door and pull the shelf out in direction A. Lift the front end of the shelf in direction B (Fig. 1.1). Then push the locking tabs on both sides of the rear end of the shelf to the appropriate position in direction C and lift the shelf in direction D (Fig. 1.2).

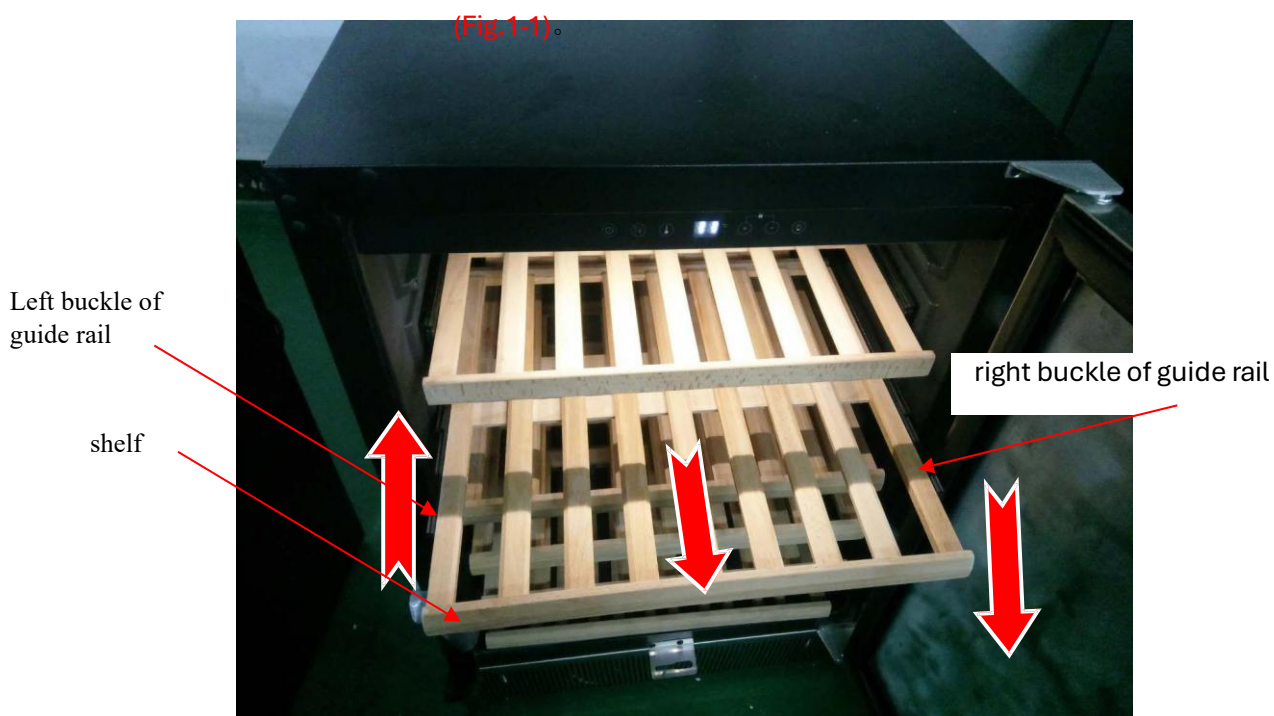


## Model:

DAUF-46.145

## Removing/installing the shelves

Pull out the shelf, press the left and right buckle of guide rail with both hands, press the left one up and the right one down, and then pull out the shelf from the guide rail.

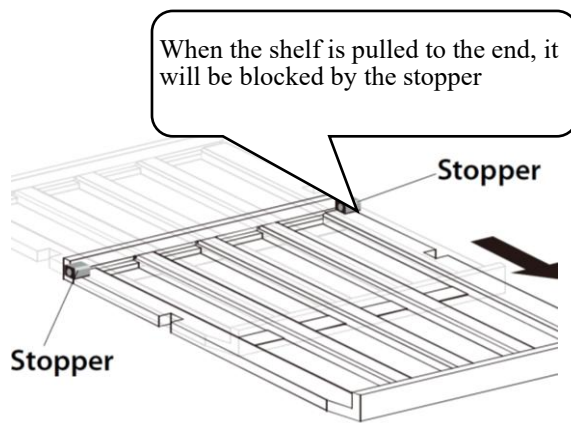


**Models:**

**DAUF-17.58, DAUF-19.58**

## Removing/installing the shelves

To take out a shelf, first pull out the shelf at a proper distance, then lift it up and take out the shelf through the two shelf stoppers on both sides of the shelf. Reinstall or replace the shelf as per the reverse operation.

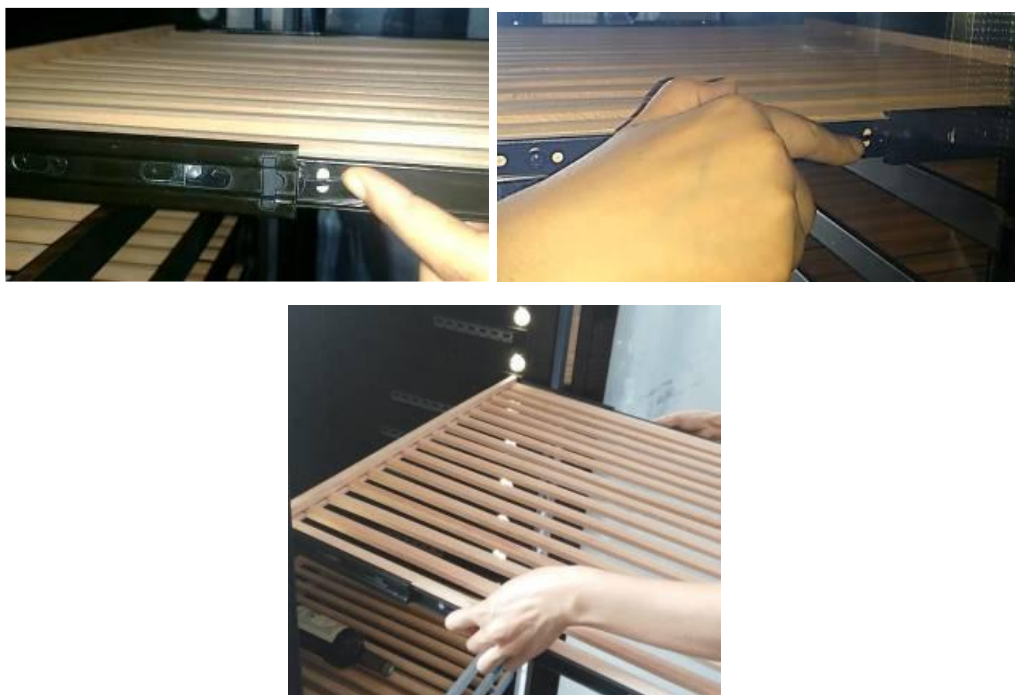


**Models:**

**DAUF-39.119DB.TO**

## Removing/installing the shelves

Slide rail shelf: When removing the shelf, pull the shelf outward to the maximum limit position, hold the shelf, pinch the black buckle of the rail on shelf and pull up on left side, press down on right side, then pull out to remove the shelf. (Fig.1)



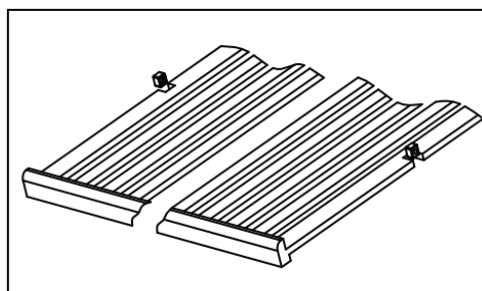
**Models:**

**DAUF-38.100, DAUF-45.125**

## Removing/installing the shelves

To remove any of the shelves from the rail compartment, move the shelf to the position where the notch of wooden shelf is exactly under the plastic post and then lift it up and pull out.

In order to replace the shelf, repeat steps described above in reverse.

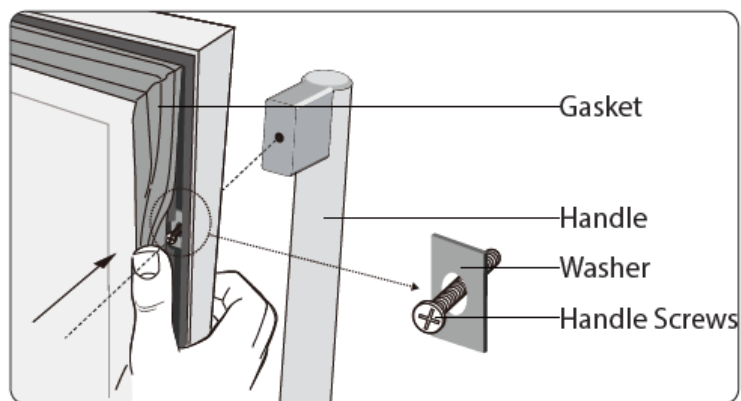


## Installing door handle

All models where door handle is a basic equipment. Except DAUF-38.100

To install the door handle:

1. Place the handle over the pins on the door.
2. Open the door and pull the door gasket from the door frame to have access to the screws.
3. Fix the handle to the door with the screws. Be careful, do not fix the screws tight to avoid damage to the door.

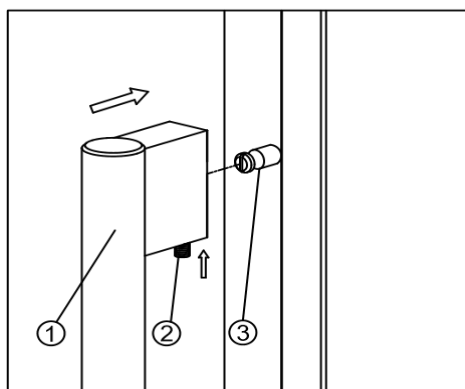


## Installing door handle

Model:

DAUF-38.100

Do not overtighten the screws & do not use power tools to install the handle. Overtighten screw causes glass breakage.



Locate the handle ① over the fixing pins ③ of the door and using the supplied allen key, tighten the securing grub screws ② to fix the handle.



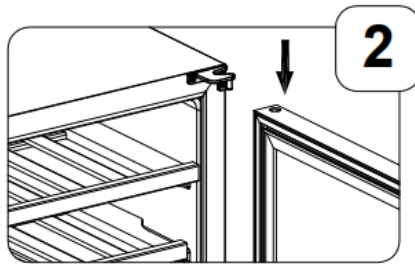
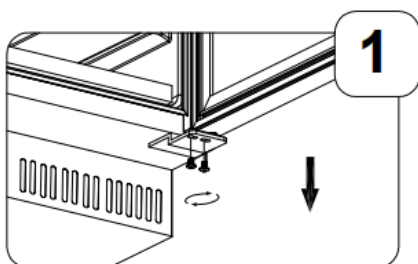
## Door reverse & hinge removal

### Model:

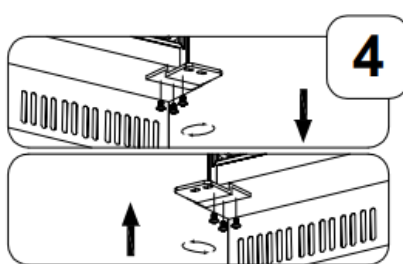
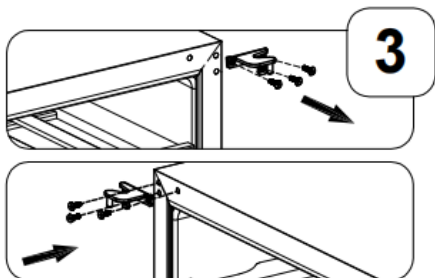
DAUF-8.23

This appliance has the capability of the door opening from either the left or right side. The unit is preset with the door opening from the left side. To reverse the opening direction, please follow below instructions.

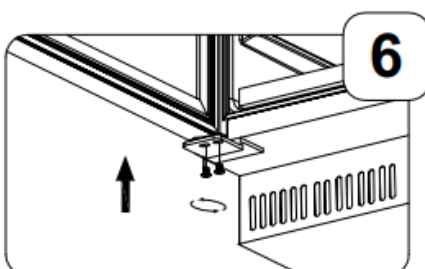
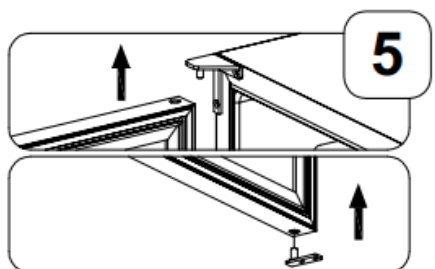
1. Open the door, remove the two screws in the bottom hinge and lift out the door.  
Remove the hinge supporter of the lower door.



2. Remove the door shaft from the right upper hinge.
3. Install and tighten the left upper hinge from the plastic bag that includes the instruction manual.
4. Remove the right lower hinge.
5. Install the left lower hinge from the plastic bag that includes the instruction manual.



6. Rotate the door 180 degrees, install the lower hinge supporter to the left of the lower door.  
Mount the door and screws tight.

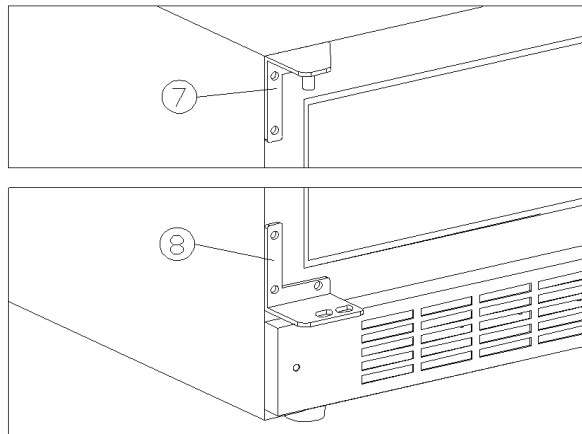
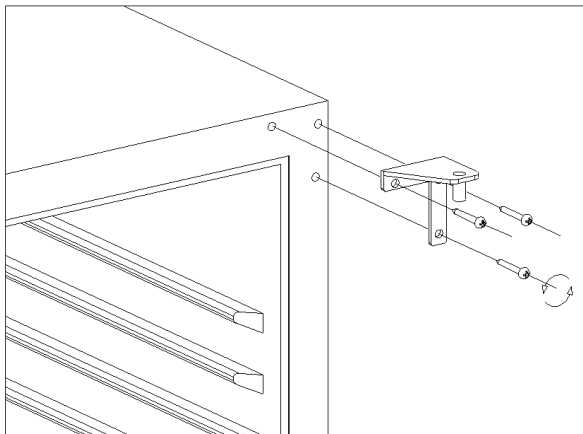


## Door reverse & hinge removal

### Model:

DAUF-17.58, DAUF-19.58, DAUF-32.83, DAUF-32.78, DAUF-38.100, DAUF-39.121, DAUF-46.138, DAUF-46.145

If desired, the door direction can be reversed after the appliance is installed. We recommend reversing the door direction with two people.



To reverse the door direction, follow the next steps:

1. Prepare a flat and soft surface to place the door on during the process.
2. Unscrew the three screws from the bottom hinge.
3. Unscrew the three screws from the top hinge.
4. Place the door on the soft surface.
5. Remove the hole covers.
6. Place the hole covers on the holes where you removed the hinges.
7. Rotate the door 180°. Align the hinges with the free holes at the top and bottom of the appliance.
8. Secure the top hinge with three screws.
9. Secure the bottom hinge with three screws.
10. Place the hole covers.

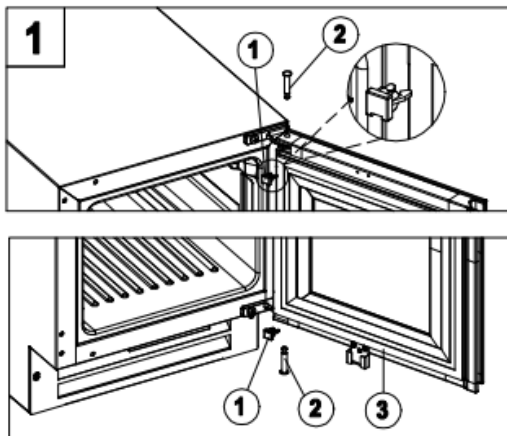


## Door reverse & hinge removal

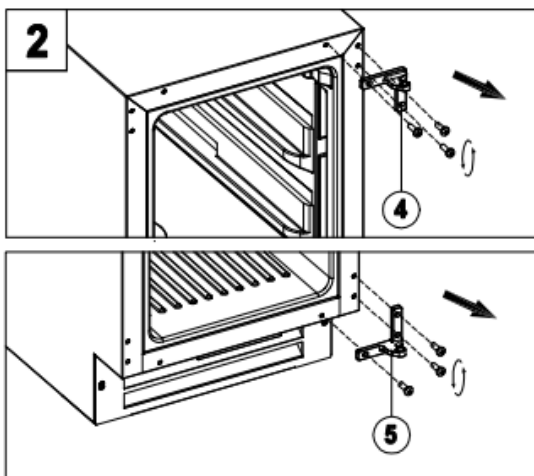
### Model:

DAUF-16.64, DAUF-41.146DBH

1. Remove the door axis button (1) from the top right hinge and the lower right hinge. Remove the door axis (2). Then remove the door (3).

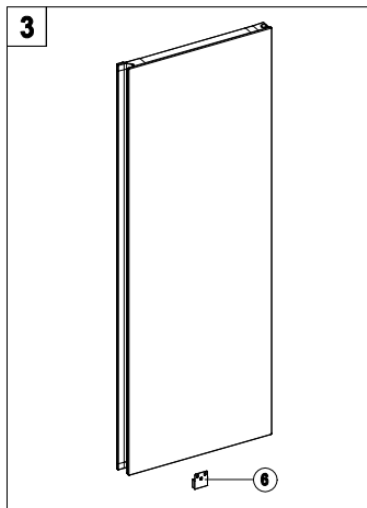


2. Unscrew 3 screws and remove the top right hinge (4), unscrew 3 screws and remove the lower right hinge (5). Then remove its.



3. All located at the bottom of the door, unscrew 2 screws and remove the door magnet (6). Then, install the door magnet, child safety lock on the opposite side of the door frame.

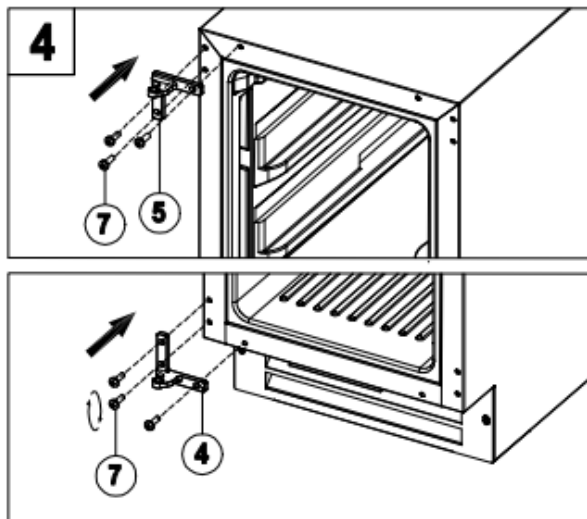
Rotate the door 180 degrees.



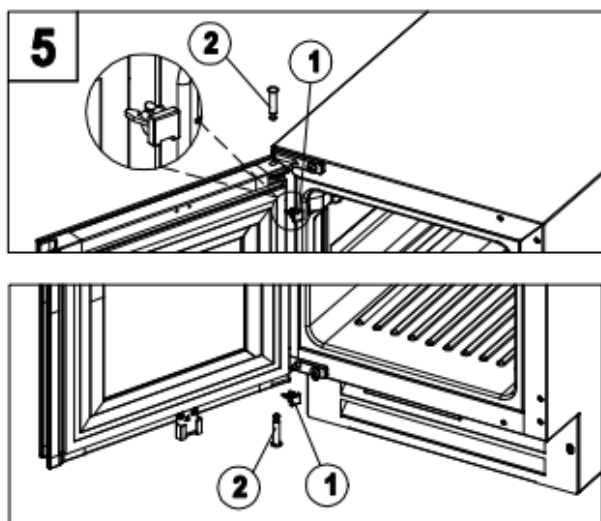
4. Remove the decorative nails (7) from the top left and the lower left of the cabinet.

Install the decorative nails to the top right and the lower right of the cabinet .

and install the top left hinge (5) and the lower left hinge (4) .



5. Install the door axis (2) and install the door once correctly aligned. Install the door axis button (1).

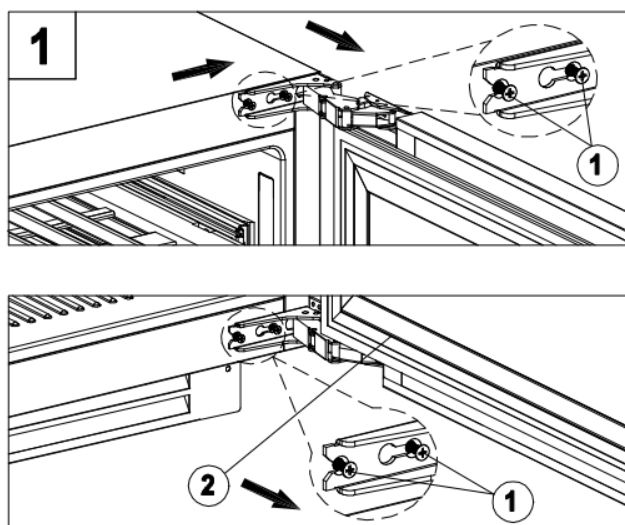


## Door reverse & hinge removal

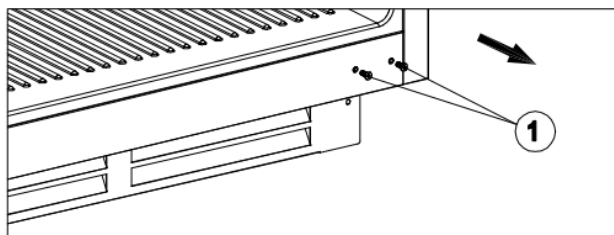
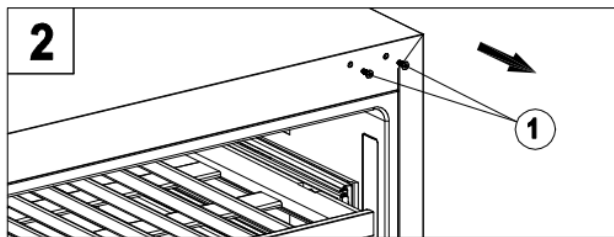
Model:

DAUF-39.119DOP.TO, DAUF-41.146DOP.TO, DAUF-45.125

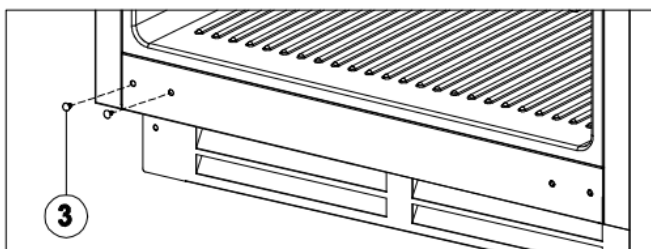
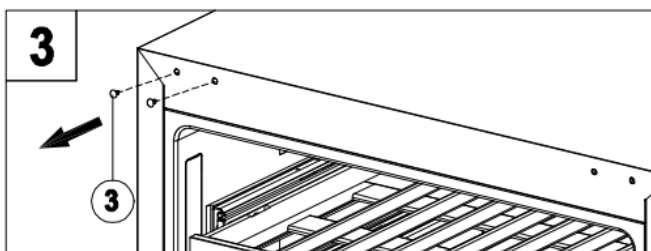
1. Loosen the screws (1) that hold the top and bottom hinges to cabinet. Remove the door (2) and leave the hinges open.



2. Remove the hinge screws.



3. Remove 4 of the decorative nails (3) from both the upper and lower left corners and reinstall them to the upper and lower right corners.



4. Remove the upper right hinge(4) and door hinge pad plate(5),

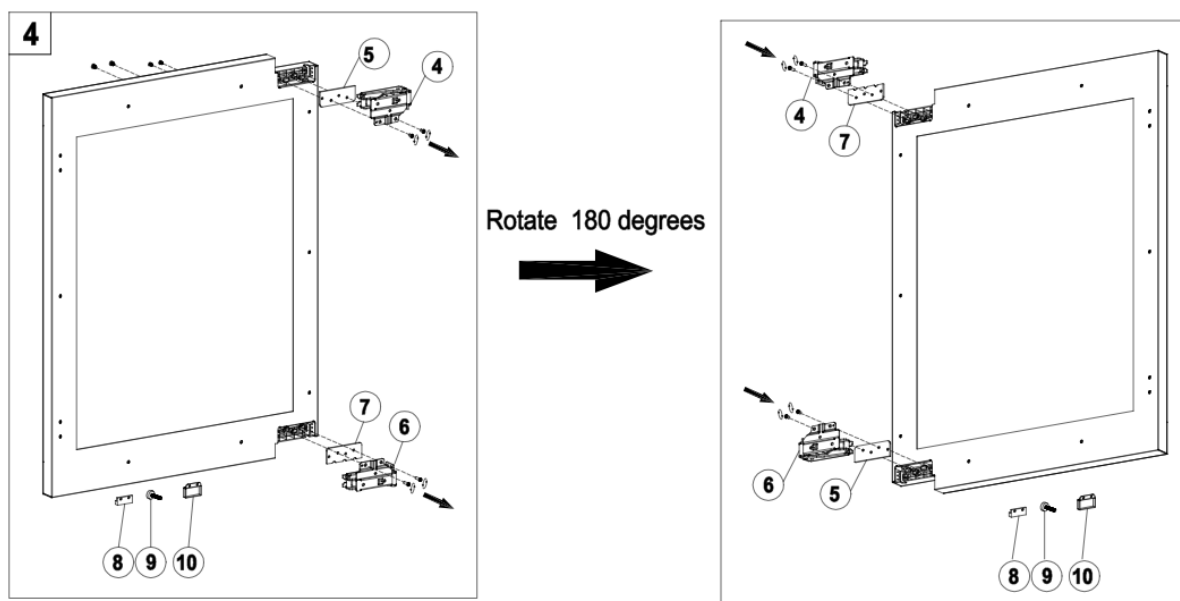
Remove the lower right hinge(6) and door hinge pad plate(7), Rotate the door 180 degrees,

Install (4) and (7) on the upper left of the door,

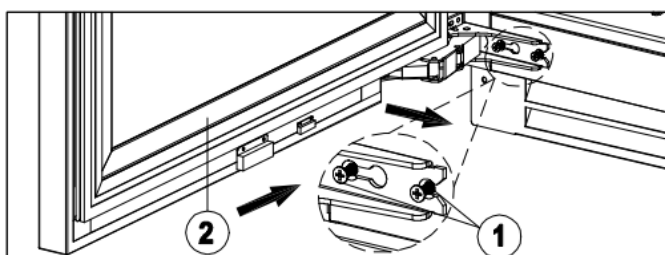
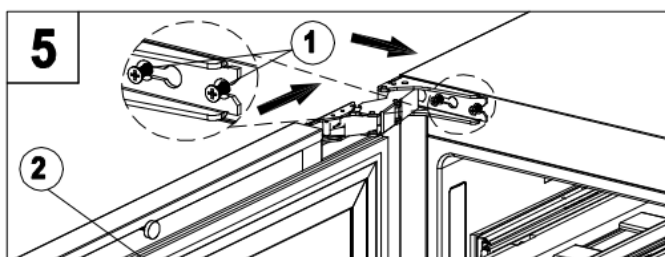
Install (6) and (5) on the lower left of the door,

Remove the door magnet (8) and Putting box (10) by 2 screws ,

Remove counterclockwise knob (9) , each and reinstall them to the opposite end of the door.



5. Install hinge screws (1) on the left side. Install screws only part of the way so that hinges can slide behind the screw heads. Tighten hinges screws(1) .



### Door gasket removal/installation

**Models:** All models

The door gasket deformation, folding, warping and other faults will cause the leakage of cold air, insufficient cooling, and long-term nonstop of the compressor. When solving the problem, first try to use an electric hair dryer to blow the deformation part of the gasket with hot air, shake it back and forth while blowing, reshape the gasket with heat. Just replace a new gasket if it cannot be fixed.

When replacing a new door gasket, first pull out the old one, then align the four corners and four sides of the new gasket with the corresponding slot on the door, and then tap the gasket gently with a rubber hammer along the route of the gasket, as shown in the following photos.



Importer and brand owner is Dunavox

### Company details

**Name:** Dunavox Kft

**Headquarters:** Hungary, 2151 Fót, Fehérkő út 8/b

**Website:** <https://dunavox.com/page/home>

**Contact:** [info@dunavox.com](mailto:info@dunavox.com)