

USER MANUAL

Flow range

Model Number: DAUF-8.23

Dear customer,

Thank you for buying this appliance and putting your trust in Dunavox. We have designed this product with the greatest care and hope it will be proud and long-term addition to your house. If you have any questions about your appliance, please let us know; we are happy to help you!

ABOUT THIS DOCUMENT

This manual is applicable to DAUF-8.23 from Dunavox. Read and understand this manual before using the product. Carefully store this manual for future reference.

We reserve the right to change the parameters without prior notice.

This manual is originally written in English. All other languages are translations of the original manual.

1. CONFORMITY

LV 2014/35/EU
EMC 2014/30/EU
ERP 2009/125/EC
RoHS 2011/65/EU and (EU) 2015/863
CB

2. SAFETY

Intended use:

This appliance is intended for storing wines at their optimal temperature. This appliance is intended to be built in.

The appliance is intended for use in household environments for typical housekeeping functions that may also be used by non-expert users for typical housekeeping functions, such as: shops, offices other similar working environments, farmhouses, by clients in hotels, motels, and other residential type environments and/or in bed and breakfast type environments.

The appliance is for indoor use only.

This appliance is intended to be used for the storage of wine.

Intended users:

This appliance can be used by children aged from 8 years and above and persons with reduced physical, sensory or mental capabilities or lack of experience and knowledge if they have been given supervision or instruction concerning use of the product in a safe way and understand the hazards involved. Children shall not play with the product. Cleaning and user maintenance shall not be done by children without supervision.

DISPOSAL OF OLD APPLIANCES

Before disposing of an old appliance remove any plugs and power leads to ensure that the appliance is inoperative.

Remove the door but leave the shelves in place to prevent children climbing inside.



This symbol on the product indicates that it must not be discarded as general household waste. Instead, it should be handed over to the applicable collection point for the recycling of electrical and electronic equipment. Disposal must be carried out in accordance with local environmental regulations for waste disposal.

By disposing of this product correctly you will help prevent potential negative consequences for the environment and human health, which would otherwise be caused by inappropriate waste handling of this product.

Warning: When disposing of an old appliance make sure that the pipe work does not become damaged.

BEFORE INSTALLING AND USING YOUR NEW APPLIANCE

Warning: Before powering up the appliance, please open the door for 5 minutes to ventilate the cabinet. Read through the instructions supplied with the appliance – failure to install or use this appliance in accordance with the instruction book may invalidate any warranty. The manufacturer does not accept any liability for damage caused through improper use, or incorrect installation. Do not install this appliance if it has been damaged during transportation. This includes the plug and supply cord. Please keep these instructions in a safe place for future reference.

Note: This appliance is intended to be used exclusively for the storage of wine.

IMPORTANT SAFETY INSTRUCTIONS

- To prevent damage to the door and door gasket, make sure the door is fully opened before pulling out any shelves.
- Do not move the wine cooler when it is loaded with wine, you might distort the appliance.
- If the power lead becomes damaged it should only be replaced by the manufacturer or a suitably qualified person.
- Never allow children to operate, play with, or crawl inside the appliance.
- Never clean appliance parts with flammable fluids.
- Do not store or use gasoline or any other flammable vapours and liquids in the vicinity of this or any other appliance. This can create a fire hazard or explosion.
- **Warning:** Do not allow the refrigerant circuit to become damaged while using or installing the appliance. Should it become damaged, do not use the appliance until you are instructed to do so by a service engineer. Refrigerant can ignite or cause damage to the eye when leaking.
- Always remember to unplug the appliance before cleaning. When disconnecting from the electricity supply, pull the plug, not the power cord.
- Do not use anything electrical inside the Wine Cabinet.
- All electrical repairs must be carried out by a qualified service engineer. Inadequate repairs may result in a major source of danger for the user and invalidate any warranty.
- Never store anything dangerous inside the appliance, such as combustibles, explosives, strong acid or alkali etc.
- Always keep any ventilation openings clear of obstruction. Should they become blocked, clear them straight away.
- Make sure that the plug is in an accessible place when installation is complete.
- Only use this appliance for domestic purposes in accordance with these instructions.
- The wine cooler is suitable for storing wine (or other bottled beverages). It is not suitable for storing fresh or frozen foods.
- This appliance can be used by children aged from 8 years and above and persons with reduced physical, sensory or mental capabilities or lack of experience and knowledge if they have been given supervision or instruction concerning use of the appliance in a safe way and understand the hazards involved. Children shall not play with the appliance. Cleaning and user maintenance shall not be made by children without supervision.
- If the refrigerant of these appliances is R600a, Flammable and explosive articles should not be put in or near the cabinet, to avoid the fire or explode caused.



INSTALLATION INSTRUCTIONS

➤ **Before Using Your Wine Chiller**

- Remove the exterior and interior packing.
- This appliance is designed to be a built-in installation.
- This appliance is intended to be used exclusively for the storage of wine
- Before connecting the Wine Cooler to the power source, let it stand upright for approximately 24 hours. This will reduce the possibility of a malfunction in the cooling system from handling during transportation.
- Clean the interior surface with lukewarm water using a soft cloth.
- This appliance is intended to be used in households and similar applications.
- When disposing your appliance, please choose an authorized disposal site.
- Install the handle on the door.
- Place your wine cooler on a floor that is strong enough to support it when it is fully loaded. To level your wine cooler, adjust the front and rear levelling feet.
- Locate the wine cooler away from direct sunlight and sources of heat (**oven**, stove, heater, radiator, etc.). Direct sunlight may affect the acrylic coating and heat sources may increase electrical consumption. Extreme cold ambient temperatures may also cause the unit not to perform properly.
- This appliance is using flammability refrigerant. So never damage the cooling pipework during transportation.
- The wine cooler should be positioned where the ambient temperature is between 10°C and 30°C. If the ambient temperature is above or below this range, the performance of the unit may be affected. Placing the appliance in extreme cold or hot conditions may cause interior temperatures to fluctuate. The range of setting temperatures may not be reached.
- Plug the wine cooler into an appropriate socket. Should the plugs require changing, use the instructions given in the Electrical Requirements section.
- Switch off the fuse of the power outlet before connecting the appliance to the mains.
- Connect the appliance to an earthed socket. Do not connect the appliance to a faulty power outlet.
- Switch off the fuse of the power outlet before performing maintenance.
- Do not connect the appliance to a power outlet when the power cord is damaged.
- Keep the appliance and the power cord away from water or moisture.

Note: The ventilation cannot work properly when the ventilation grille is covered. The appliance can overheat.
Do not cover the ventilation grille.

Note: Always fix the appliance to the cabinet.

Note: Storing opened bottles on the shelves can cause leakage and mold in the wine cooler. Do not store bottles that have been opened.

Important: If the lowest temperature is set during periods of high humidity and ambient temperature, condensation may appear on outside surfaces and the door of wine cellar, this is a normal phenomenon.

➤ **Attention**

- Store wine in sealed bottles;
- Do not overload the cabinet;
- Do not open the door unless necessary;
- Do not cover shelves with aluminum foil or any other shelf material which may prevent air circulation;
- Should the wine cooler be stored without use for long periods it is suggested, after a careful cleaning, to leave the door open to allow air to circulate inside the cabinet in order to avoid possible formations of condensation, mold or odors.

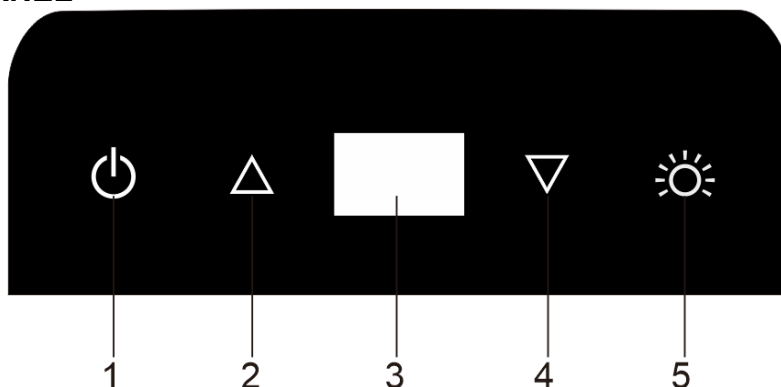
➤ **Ambient Room Temperature Limits**

This appliance is designed to operate at ambient temperatures specified by its temperature class marked on the rating plate.

Class	Symbol	Ambient Temperatures range(°C)
Temperate	N	+ 16 to + 32
Subtropical	ST	+ 16 to + 38

OPERATING YOUR WINE CELLAR

➤ CONTROL PANEL



The temperature setting can be adjusted from 5°C to 18°C.

1. To control the appliance, turn ON or OFF, (press and hold this button for approximately 3 seconds).
2. Used to raise(warm) the temperature in 1°C.
3. To show the set temperature of the wine cellar.
4. Used to lower(cool) the temperature in 1°C.
5. To control the interior light ON or OFF.

To reduce energy consumption, the wine cellar will automatically switch off the internal light after 10 minutes. If you want the internal light to remain on continuously. Press and hold this button for 5 seconds until display show "LP". To revert to normal mode. Press and hold this button for 5 seconds until display show "LF".

NOTE: To view the actual temperature at anytime press and hold either up or down for approximately 5 seconds, the actual temperature will temporarily flash in the LED display for 5 seconds. After this it will revert back to the set temperature.

Flashing LED = Cabinet temperature

Steady LED = Set temperature

Attention:

- If the unit is unplugged, power lost, or turned off, you must wait 5 minutes before restarting the unit. If you attempt to restart before this time delay, the wine cooler will not start.
- When you use the wine cooler for the first time or restart the wine cooler after having been shut off for a long time, there could be a few degrees variance between the temperature you select, and the one indicated on the LED readout. This is normal and it is due to the length of the activation time. Once the wine cooler is running for a few hours everything will be back to normal.

➤ TEMPERATURE MEMORY FUNCTION

If the power is suddenly lost, the set temperature will be saved by the unit. Once the power is back on, the unit will be at the same setting temperature.

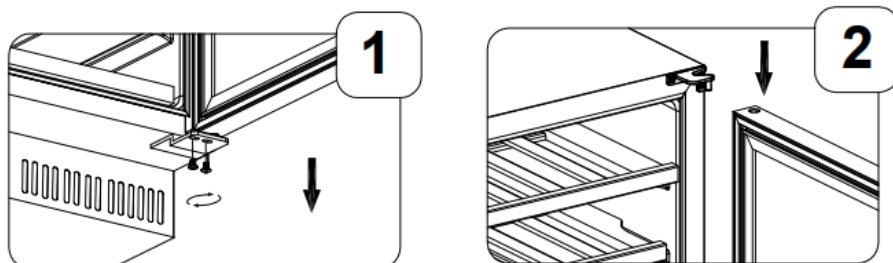
➤ TEMPERATURE ALARM FUNCTION

If the interior temperature is higher than 23°C (73°F), "HI" is shown on the display panel, and the buzzer alarm sounds continuously after one hour. This indicates that the inner temperature is too high, please look for the reason. If the inner temperature is lower than 0°C (32°F), "LO" is shown on the display panel; the alarm and the malfunction indicator light turn on after fifteen minutes.

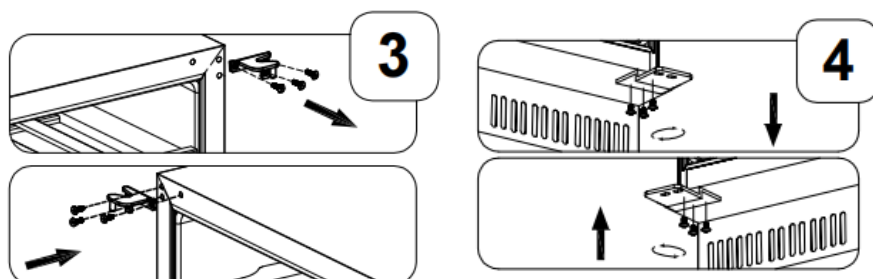
➤ Reverse the door

This appliance has the capability of the door opening from either the left or right side. The unit is preset with the door opening from the left side. Should you desire to reverse the opening direction, please contact local service provider, or follow below instructions.

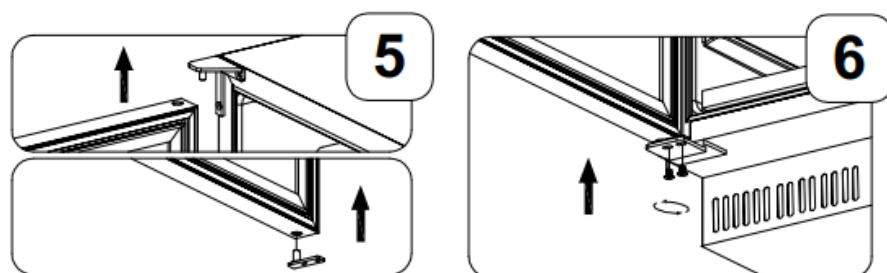
Open the door, remove the two screws in the bottom hinge and lift out the door.
Remove the hinge supporter of the lower door.



Remove the door shaft from the right upper hinge.
Install and tighten the left upper hinge from the plastic bag that includes the instruction manual.
Remove the right lower hinge.
Install the left lower hinge from the plastic bag that includes the instruction manual.

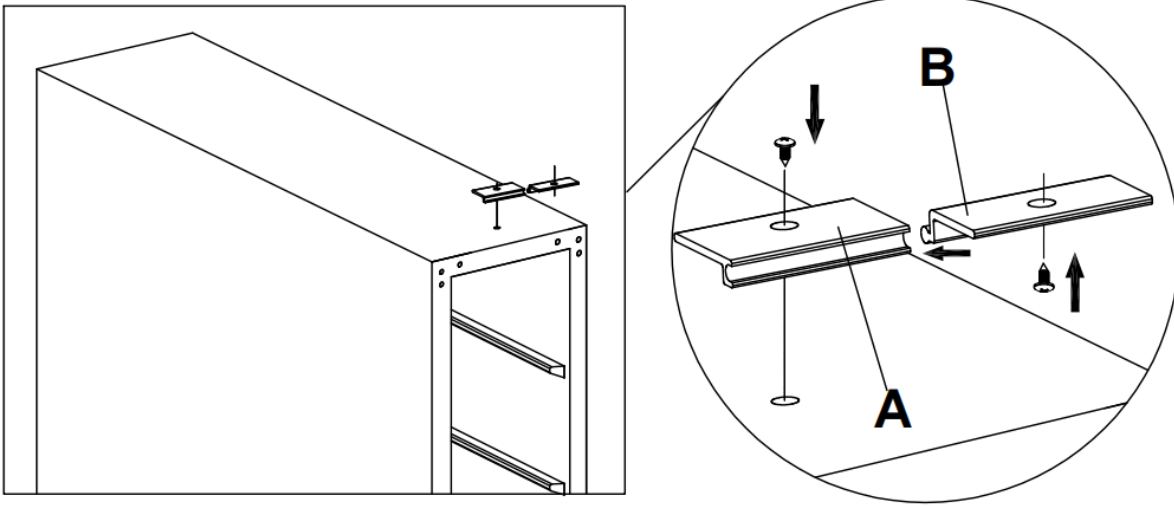


Rotate the door 180 degrees, install the lower hinge supporter to the left of the lower door.
Mount the door and screws tight.



➤ INSTALLING THE TOP FIXING BRACKET

1. After installing the wine cooler, please open the door, take out the fixing bracket (A) from the hardware package, and fix it on the top of the wine cooler with 1 screw;
2. Take out the fixing bracket (B) from the hardware package, insert its cylinder edge to the groove of bracket A from the side, and secure it to the counter from the bottom to the top with 1 screw.



➤ **INSTALLING STAINLESS STEEL HANDLE**

1. Push aside the door gasket on the side you wish to install the handle. Under the gasket you will see two designated holes for handle installation and pre-installed screws.
2. Install the handle tightly as shown with two screws, lock washers and flat washers pre-installed.

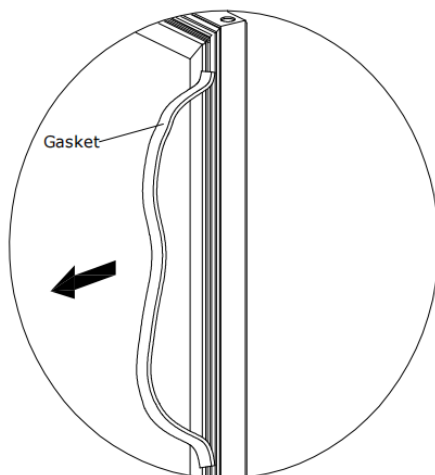


Fig # 1

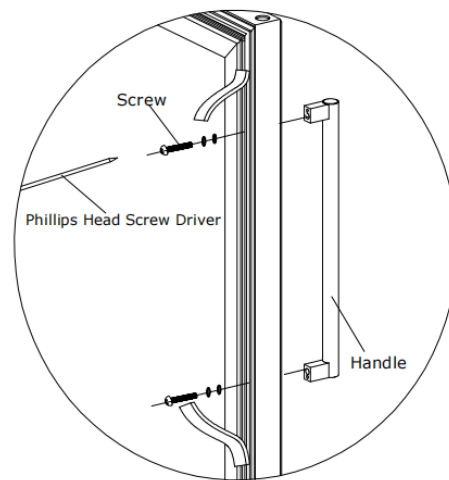
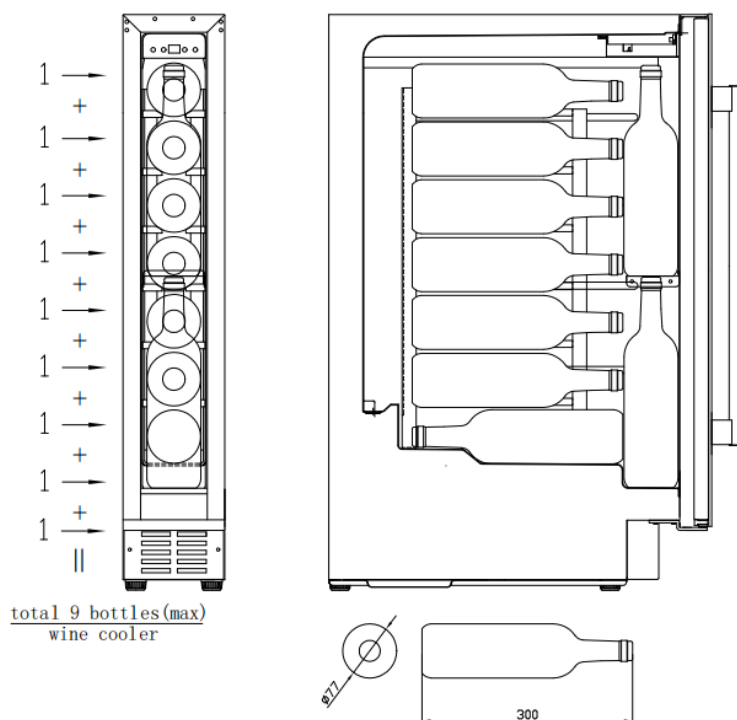


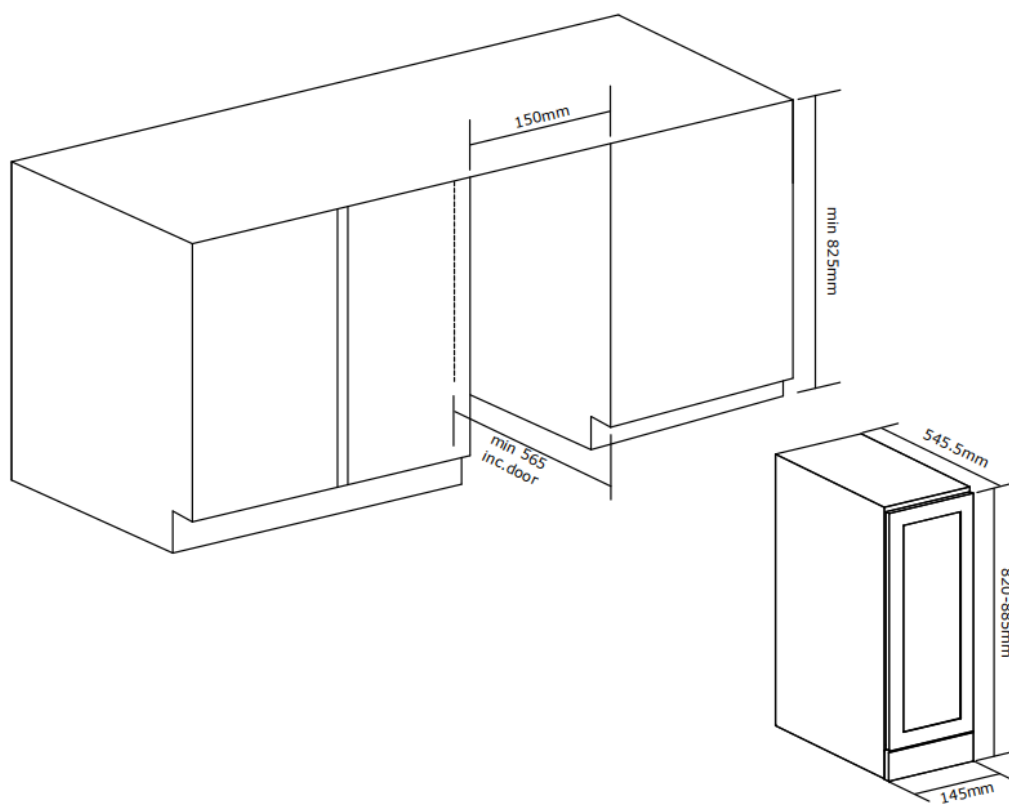
Fig # 2

➤ BOTTLE LOADING PLAN

The maximum number of bottles that can be loaded into the cabinet are for information only. Wine cooler is designed for standard Bordeaux bottles. See the bottle size on the picture below.



➤ INSTALLATION DRAWING



CARE & MAINTENANCE

➤ **Clean your wine cellar**

Turn off the power, unplug the appliance, and remove all items including shelves.

Wash the inside surfaces with warm water and diluted mild detergent.

Wash the shelves with a diluted mild detergent.

Wring excess water out of the sponge or cloth when cleaning area of the controls, or any electrical parts.

Wash the outside cabinet with warm water and diluted mild liquid detergent.

Rinse well and wipe dry with a clean soft cloth.

Defrost the unit every 6 months.

Defrosting process

To defrost the appliance:

1, Switch off the appliance

2, Remove the bottles from the appliance

3, Leave the door open to speed up the process

4, Place towels at the door opening of the appliance to absorb any water.

Defrosting usually takes 2-4 hours. The appliance is defrosted when all the frost from the evaporator is gone.

5, Switch the appliance back on

➤ **Power failure**

Most power failures are corrected within a few hours and should not affect the temperature of your appliance if you minimize the number of times the door is opened. If the power is going to be off for a long period of time, you need to take the proper steps to protect your contents.

➤ **Vacation Time**

Leave the wine cellar operating during vacations of less than three weeks.

If the appliance will not be used for more than three months, remove all items and turn off the appliance.

Clean and dry the interior thoroughly. To prevent odor and mold growth, leave the door open slightly, blocking it open if necessary.

Make sure there will be no children and animals climb into the appliance.

➤ **Moving your wine cooler**

Remove all items.

Take out the loose items inside the wine cellar (such as shelf) or fix the loose items with the foam.

Turn the adjustable leg up to the base to avoid damage.

Tape the door shut.

Be sure the appliance stays secure in the upright position during transportation. Also protect outside of appliance with a blanket or similar item.

➤ **Energy saving tips**

The wine cellar should be located in the coolest area of the room, away from heat producing appliances, and out of the direct sunlight.

Set temperature according to the characteristics of your wine to maximize energy saving.

PROBLEMS WITH YOUR WINE CELLAR

You can solve common problems by reading the suggestions below to save the cost of a possible service call. Try to see if you solve the problem before calling the service.

Troubleshooting Guide

Problem	Possible Cause
Wine cooler does not operate	No plugged in. The appliance is turned off. The circuit breaker tripped or a blown fuse.
Wine cooler is not cold enough	Check the temperature control setting. External environment may require a higher setting. The door is always opened. The door is not closed completely. The door gasket does not seal properly.
Turns on and off frequently	The room temperature is hotter than normal. Overload of the cabinet The door is always opened. The door is not closed completely. The temperature control is not set correctly. The door gasket does not seal properly.
The light does not work	Not plugged in. The circuit breaker tripped or a blown fuse. The light bulb has burned out. The light button is "OFF"
Abnormal vibrations	Check to sure that the Wine cellar is level.
Too much noise	The rattling noise may come from the flow of the refrigerant, which is normal. As each cycle ends, you may hear gurgling. Contraction and expansion of the inside walls may cause popping and crackling noises. The wine cellar is not level.
The door will not close properly	The wine cellar is not level. The door was reversed and not properly installed. The gasket is dirty. The shelves are out of position.

WARRANTY

This product comes with a warranty period of 3 years. You can extend the warranty of your compressor up to 5 years if you register your appliance via the following link:
dunavox.com/product-registration

The warranty does not cover:

- Damage in transit or when moving the appliance.
- Any damages caused from negligence, accident, improper use, improper installation/service or use for purposes other than those described in the instruction manual.
- Damage caused by connecting your product to the wrong power source.
- Damage from power failure.
- Faulty installation or modification made during installation.
- Damage caused by unauthorized repair.
- Any damages resulting from force majeure, fire disaster or natural disaster.
- Alterations to the product without express permission from the manufacturer.
- Parts such as light, removable shelves, or plastic.
- Any spoilage or damage to wines or any other contents incidental or consequential to possible defects of the unit.

The warranty clauses and specifications are subject to change without notice.